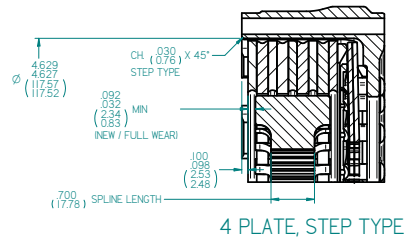


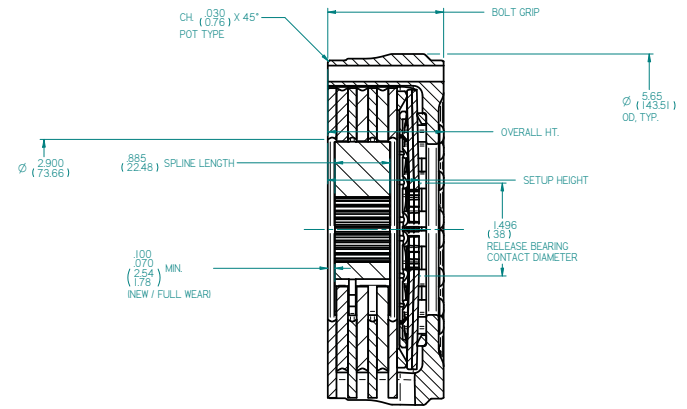


REV	ECN	DATE	BY	CHANGE OR ADDITION

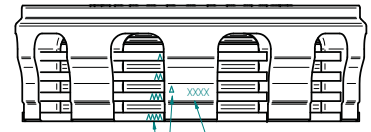
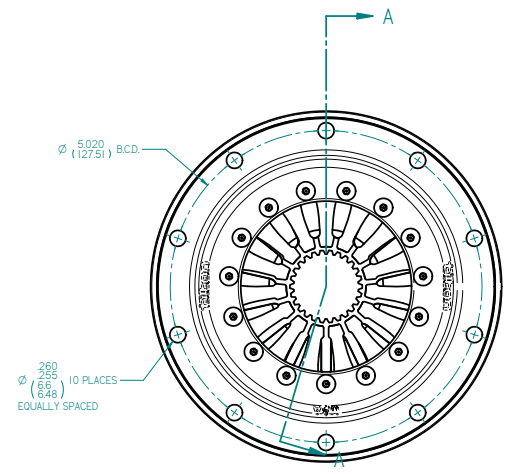


4 PLATE, STEP TYPE

CLUTCH P/N	# OF DISCS	FLYWHEEL MOUNTING	SETUP HEIGHT (NEW)		SETUP HEIGHT (.010 WEAR)		BOLT GRIP = OVERALL HEIGHT	
			IN	MM	IN	MM	IN	MM
6513XXX-P	3	POT	1.465	37.21	1.505	38.23	1.864	47.35
6513XXX-S	3	STEP	1.465	37.21	1.505	38.23	1.963	49.86
6514XXX-P	4	POT	1.790	45.47	1.830	46.48	2.189	55.60
6514XXX-S	4	STEP	1.790	45.47	1.830	46.48	2.288	58.12



3 PLATE, POT TYPE



ALIGNMENT MARKS. MAINTAIN ORDER AND ORIENTATION.

- NOTES:**
1. PRIMARY DIMENSIONS ARE INCHES. SECONDARY DIMENSIONS (MM).
 2. SUPPLIED WITH .180" (4.06mm) THICK PRESSURE PLATE. ADDITIONAL PLATES AVAILABLE (.010"-.25mm INCREMENTAL THICKNESS).
 3. SUPPLIED WITH SPLINED DRIVE HUB. SPECIFY SPLINE WHEN ORDERING.
 4. MUST BE USED WITH RADIUS FACED RELEASE BEARING. 38mm CONTACT DIAMETER HIGHLY RECOMMENDED.
 5. CARBON PLATE THICKNESSES VARY BY PART NUMBER. REFER TO CARBON/CARBON CLUTCH BUILD RECORD PER INDIVIDUAL CLUTCH SERIAL NUMBER.

TILTON ENGINEERING, INC. (805) 688-2353 FAX (805) 688-2745
 25 EASY STREET P.O. BOX 1787 BUELLTON, CALIFORNIA 93427 USA

TITLE: INSTALLATION DRAWING CLUTCH, CARBON/CARBON, OT-V 4.5"

DRN BY LUND	CHKD WAHL	SCALE 1:1	DWG 6397	REV NC
PN 651XXXX-X	DATE 8/5/2016	SHEET 1 OF 1		

*This document contains proprietary information of TILTON ENGINEERING, INC., and its receipt or possession does not convey the rights to reproduce, disclose its contents, or to manufacture, use or sell anything it may describe. Reproduction, disclosure, or use without specific written authorization of TILTON ENGINEERING, INC. is strictly forbidden.

