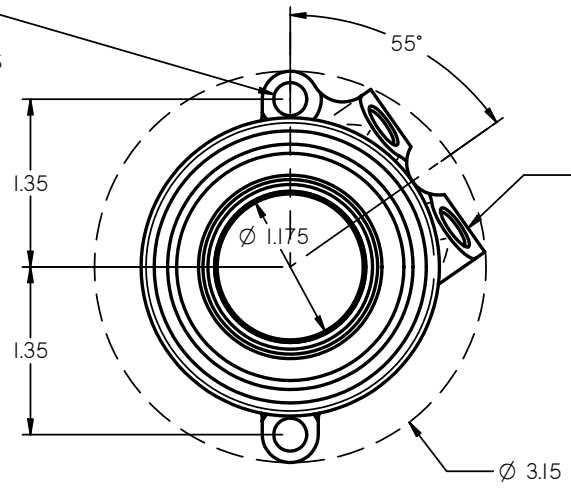
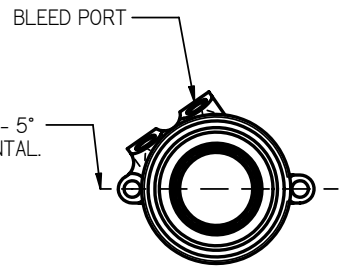
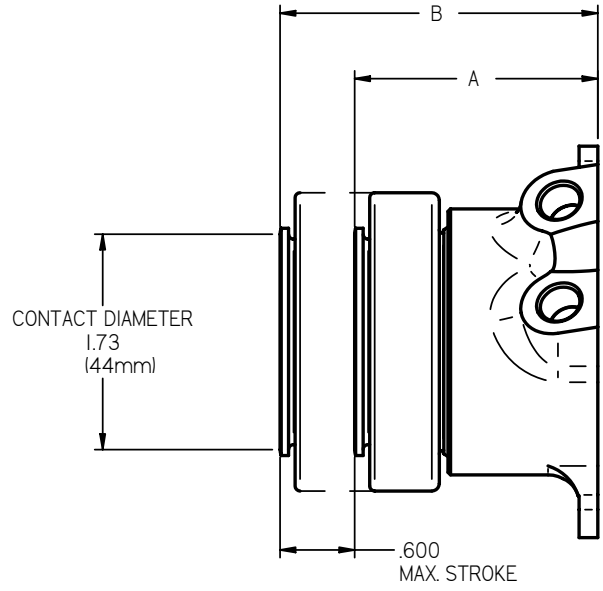


ZONE	CHKD	DATE	REV	ECN	CHANGE OR ADDITION
------	------	------	-----	-----	--------------------

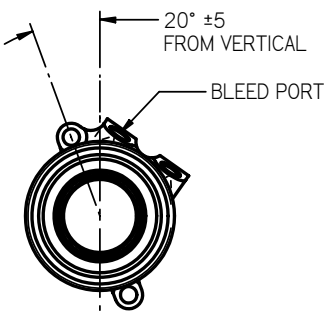
Ø .266
ACCEPTS 1/4 AND
6mm FASTENERS



AN-3 PORT, 3/8-24 UNF THREADS.
PORTS WILL ALLOW STRAIGHT AND
BANJO FITTINGS. 2 PL.



BOLT HOLES \pm 5°
FROM HORIZONTAL.



20° \pm 5
FROM VERTICAL

BLEED PORT

POSITION IN ONE OF TWO
ORIENTATIONS FOR PROPER
BLEED PORT SET UP.

PART NUMBER	SET UP HEIGHT "A"	EXTENDED HEIGHT "B"
61-9002	1.95	2.55
61-9012	2.02	2.67

- NOTES:
1. DIMENSIONS IN INCHES EXCEPT WHERE NOTED.
 2. HYDRAULIC AREA: .93 IN²
 3. SELF ADJUSTING FOR CLUTCH WEAR.
 4. USE BEARING P/N 62-031

TOLERANCES:	UNLESS SPECIFIED OTHERWISE	MAT'L SPEC COND HARD
	<u>DRILL HOLES</u>	
.X \pm .020	.013-.040: +.001/- .001	FINISH SPEC
.XX \pm .010	.041-.130: +.002/- .001	
.XXX \pm .005	.131-.229: +.003/- .001	
FRACT \pm 1/32	.230-.500: +.004/- .001	
ANGLE \pm 1/2°	.501-.750: +.005/- .001	
CONC(TIR) .005	.751-1.000: +.007/- .001	

TILTON ENGINEERING, INC.		FAX 805/688-2745	
25 EASY STREET, P.O. BOX 1787, BUELLTON, CA 93427 805/688-2353			
TITLE:		ASSEMBLY, HYDRAULIC RELEASE BEARING 9000 SERIES	
DRAWN BY	CHAMBERS	CHKD	SCALE 1 : 1
P/N	SEE TABLE	DATE	4/15/05
		SHEET	1 OF 1
		DWG	4940

This document contains proprietary information of TILTON ENGINEERING, INC. and its receipt or possession does not constitute an offer of any product or service. Reproduction, manufacture, use or selling anything in any description, reproduction, disclosure or use without specific written authorization of TILTON ENGINEERING INC. is strictly forbidden.

