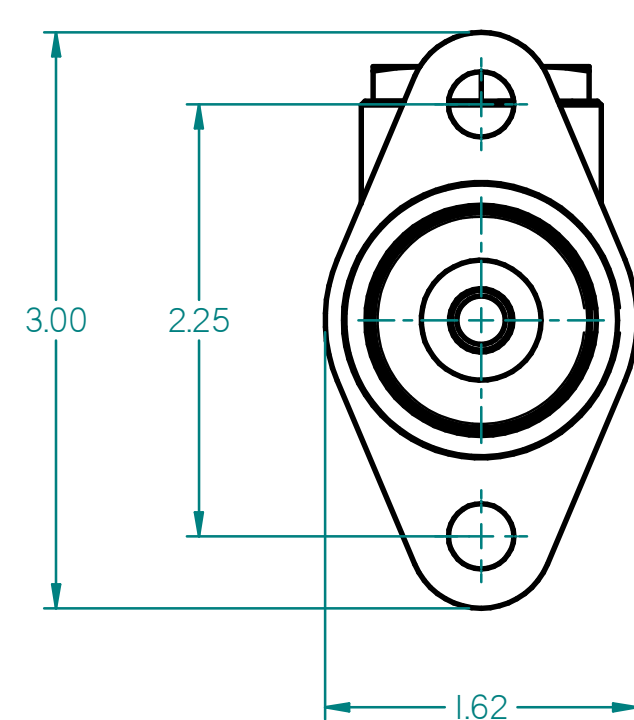
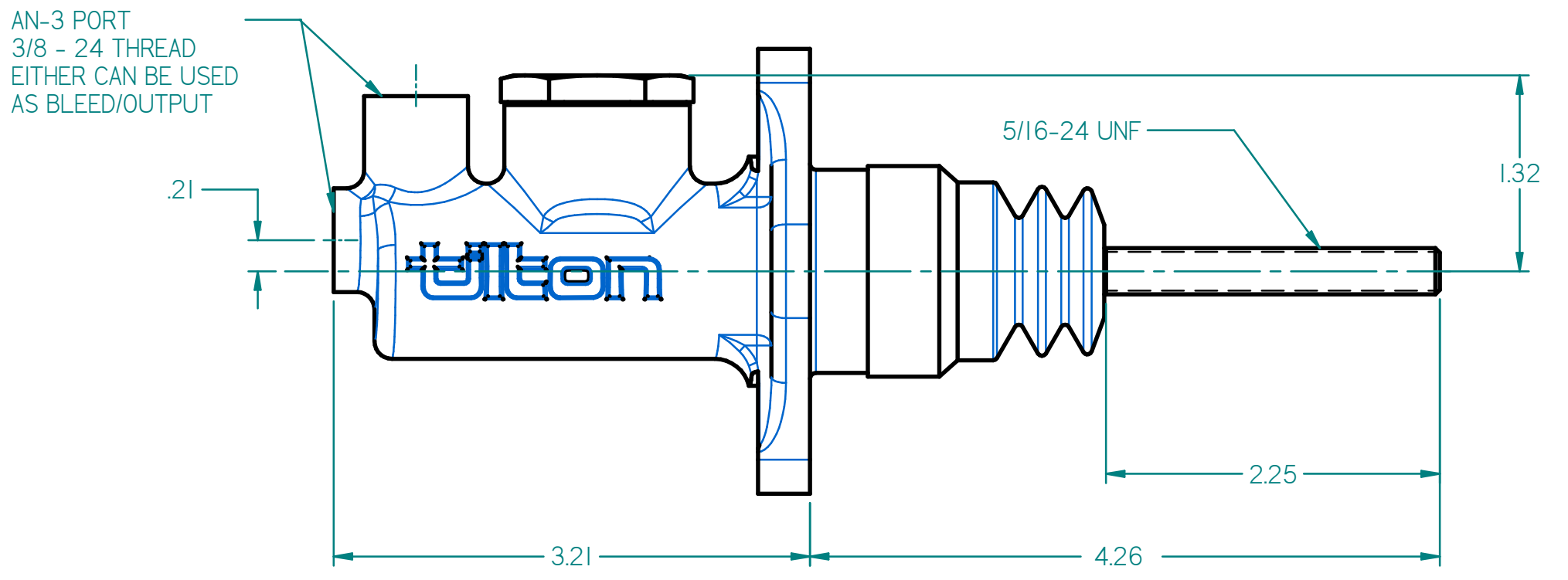
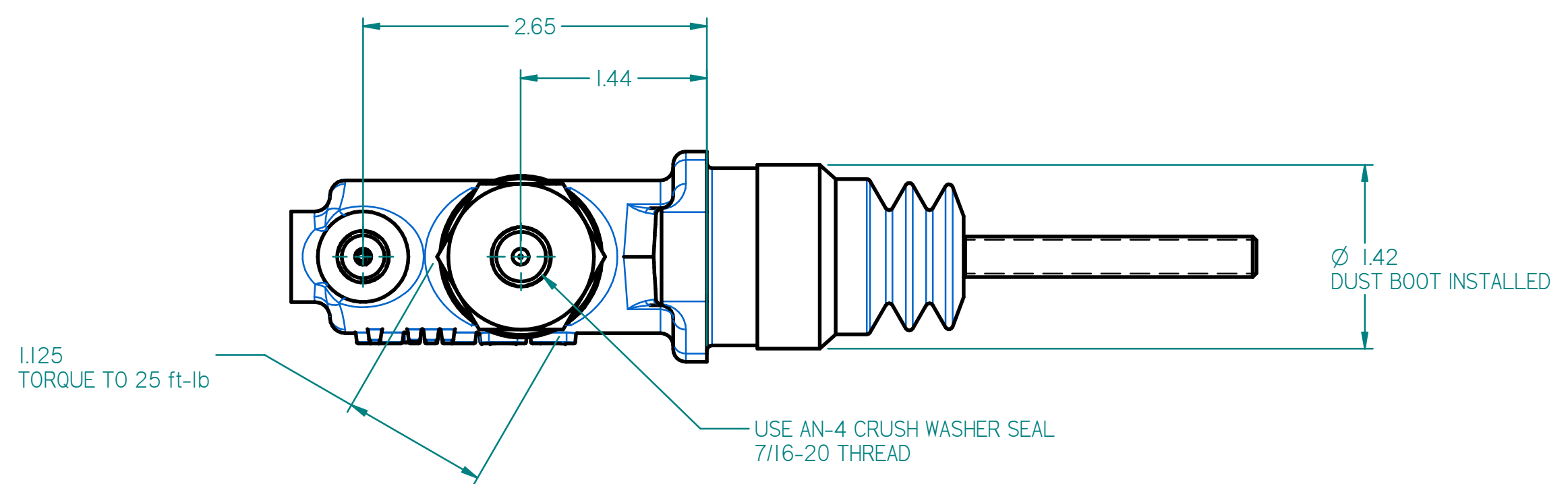


ZONE	CHK'D	DATE	REV	ECN	CHANGE OR ADDITION
------	-------	------	-----	-----	--------------------

"This document contains proprietary information of TILTON ENGINEERING, INC., and its receipt or possession does not convey the rights to reproduce, disclose its contents, or to manufacture, use or sell anything it may describe. Reproduction, disclosure, or use without specific written authorization of TILTON ENGINEERING, INC. is strictly forbidden."



UPDATED 76 SERIES TO NEW BODY AND INLET FITTING
5-1-13, CBL

NOTES:
 1. ALL DIMENSIONS ARE INCHES UNLESS OTHERWISE SPECIFIED

TOLERANCES: UNLESS SPECIFIED OTHERWISE	
.X ±	.020
.XX ±	.010
.XXX ±	.005
FRACT ±	1/32
ANGLE ±	1/2°
CONC(TIR)	.005
DRILL HOLES	
	.013-.040 +.001/-.001
	.041-.130 +.002/-.001
	.131-.229 +.003/-.001
	.230-.500 +.004/-.001
	.501-.750 +.005/-.001
	.751-1.000 +.007/-.001
	1.001-2.000 +.010/-.001

MAT'L	TILTON ENGINEERING, INC. (805)688-2353 FAX (805)688-2745		
SPEC	25 EASY STREET P.O. BOX 1787 BUELLTON, CALIFORNIA 93427 USA		
COND	TITLE: INSTALLATION DRAWING		
HARD	76 SERIES MASTER CYLINDERS		
FINISH	DRN BY VAN SCHMUS	CHK'D	SCALE 1 : 1
SPEC	P/N 76-XXX	DATE 02/21/05	DWG 4924
		SHEET 1 OF 1	

tiltonENGINEERING