

tilton[®]

5XXX Series

Typical Application

Direct mount inside bellhousing.



Hydraulic Release Bearings | **GEN3**

Tilton HRBs

Tilton offers a wide range of hydraulic release bearings (HRB) for use with push-type clutches. Hydraulic release bearings are available for use with smaller diameter racing clutches (4.5", 5.5", & 7.25") and most OE-type clutches.

Tilton hydraulic release bearings are designed to eliminate the need for mechanical linkages, pivot balls, spacers and external slave cylinders.

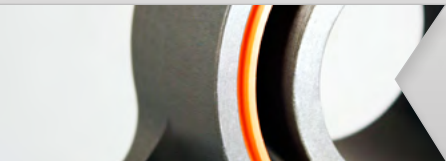
Advanced manufacturing | Renowned Tilton quality

52XX-Series HRB 44mm Bearing

[Installation Drawing](#)

53XX-Series HRB 38mm Bearing

[Installation Drawing](#)



Monoseal Technology

Tilton's unique monoseal technology is incorporated into all hydraulic release bearings. The high temperature monoseal features a quad tensioner to ensure proper seal tension. Seals have been tested to hundreds of thousands of actuations without failure. Tilton hydraulic release bearings feature a wiper seal to provide protection from debris entering the bore.

.....



Constant Contact Design

The constant contact design of Tilton hydraulic release bearings maintains pedal feel even as the clutch wears. In addition, Tilton hydraulic release bearings self-adjust for clutch wear.

.....



Proprietary Coatings

Tilton hydraulic release bearings feature superior materials and proprietary low friction coatings, providing longevity and consistency.

.....



High Quality Bearings

Tilton hydraulic release bearing assemblies feature high-quality bearings to provide smooth and reliable operation.

52XX-Series HRB

4-leg | **44mm** bearing



5.5" - 7.25" clutches

Radius face bearing

Aluminum Body & Piston

Mount: **4-bolt pattern**
Bearing contact diameter: **1.75" (44mm)**
Piston Area: **1.215 in² (784mm²)**
Max Stroke: **.700" (17.8 mm)**
Ports: **AN3 (3/8"-24)**
Weight: **.95 lbs (varies by p/n)**
Includes: **AN3 fittings (2)**

Part Number	Overall Height	
	with shim	without shim
60-5200	1.92" (48.8mm)	1.87" (47.5mm)
60-5210	2.02" (51.3mm)	1.97" (50.0mm)
60-5220	2.12" (53.8mm)	2.07" (52.6mm)
60-5230	2.22" (56.4mm)	2.17" (55.1mm)
60-5240	2.32" (58.9mm)	2.27" (57.7mm)
60-5250	2.42" (61.5mm)	2.37" (60.2mm)
60-5260	2.52" (64.0mm)	2.47" (62.7mm)
60-5270	2.62" (66.5mm)	2.57" (65.3mm)
60-5280	2.72" (69.1mm)	2.67" (67.8mm)
60-5290	2.82" (71.6mm)	2.77" (70.4mm)

HRB comes from Tilton factory with shim installed in piston under the bearing. Shim can be removed by customer to gain .050" (1.3mm) additional clearance.

Installation Drawing

60-52XX HRB

ITEM	PART NUMBER	DESCRIPTION	QTY
1	62-1503	HYDRAULIC BASE	1
2	62-617	WIPER	1
3	62-614	HYDRAULIC SEAL	1
4	73-820	FITTING, AN-3	2
5	SEE CHART	PISTON	1
6	62-031	BEARING	1
7	62-903	SHIM	1

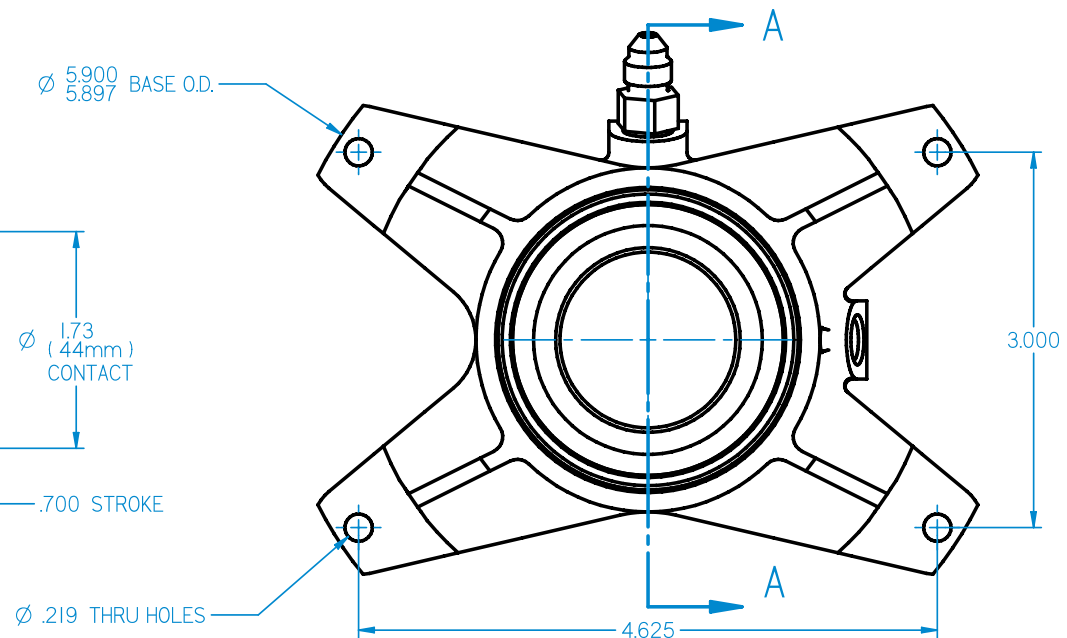
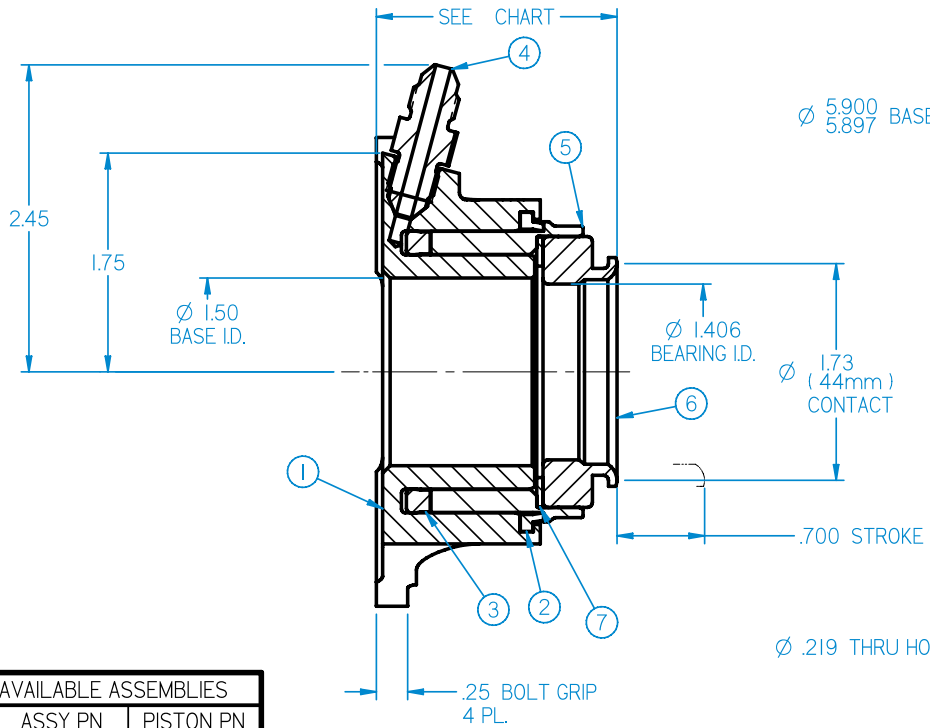


CHART OF AVAILABLE ASSEMBLIES		
HEIGHT	ASSY PN	PISTON PN
1.87"-1.92"	60-5200	62-6000
1.97"-2.02"	60-5210	62-6001
2.07"-2.12"	60-5220	62-6002
2.17"-2.22"	60-5230	62-6003
2.27"-2.32"	60-5240	62-6004
2.37"-2.42"	60-5250	62-6005
2.47"-2.52"	60-5260	62-6006
2.57"-2.62"	60-5270	62-6007
2.67"-2.72"	60-5280	62-6008
2.77"-2.82"	60-5290	62-6009

SECTION A-A

INSTALLATION NOTES:

1. USE ONLY WITH DOT-3 OR DOT-4 BRAKE FLUID.
2. NO INTERNAL TRAVEL LIMITER. MUST BE USED WITH CLUTCH PEDAL STOP.
3. SEAL REBUILD KIT = 62-905.
4. SEAL INSTALLATION TOOL = 96-002.
5. HYDRAULIC AREA = 1.215 SQ IN.
6. EITHER PORT MAY BE USED FOR FEED OR BLEED.
7. ORIENTATE BLEED PORT TO WITHIN 10 DEGREES OF TOP CENTER TO FACILITATE BLEEDING PROCESS.
8. UNIT IS SHIPPED WITH SHIM 62-903 (.050" THICK) INSTALLED UNDER THE BEARING WHICH MAY BE REMOVED FOR ADDITIONAL CLEARANCE.
9. BOTH PORTS 3/8-24 UNF X .28 THREAD DEPTH.

* HEIGHTS SHOWN IN CHART ARE WITH AND WITHOUT 62-903 SHIM

53XX-Series HRB

4-leg | **38mm** bearing



4.5" - 5.5" clutches

Radius face bearing

Aluminum Body & Piston

Mount: **4-bolt pattern**
Bearing contact diameter: **1.50" (38mm)**
Piston Area: **1.215 in² (784mm²)**
Max Stroke: **.700" (17.8 mm)**
Ports: **AN3 (3/8"-24)**
Weight: **.95 lbs (varies by p/n)**
Includes: **AN3 fittings (2)**

Part Number	Overall Height	
	<i>with shim</i>	<i>without shim</i>
60-5300	1.92" (48.8mm)	1.87" (47.5mm)
60-5310	2.02" (51.3mm)	1.97" (50.0mm)
60-5320	2.12" (53.8mm)	2.07" (52.6mm)
60-5330	2.22" (56.4mm)	2.17" (55.1mm)
60-5340	2.32" (58.9mm)	2.27" (57.7mm)
60-5350	2.42" (61.5mm)	2.37" (60.2mm)
60-5360	2.52" (64.0mm)	2.47" (62.7mm)
60-5370	2.62" (66.5mm)	2.57" (65.3mm)
60-5380	2.72" (69.1mm)	2.67" (67.8mm)
60-5390	2.82" (71.6mm)	2.77" (70.4mm)

HRB comes from Tilton factory with shim installed in piston under the bearing. Shim can be removed by customer to gain .050" (1.3mm) additional clearance.

Installation Drawing

60-53XX HRB

ITEM	PART NUMBER	DESCRIPTION	QTY
1	62-1503	HYDRAULIC BASE	1
2	62-617	WIPER	1
3	62-614	HYDRAULIC SEAL	1
4	73-820	FITTING, AN-3	2
5	SEE CHART	PISTON	1
6	62-008	BEARING	1
7	62-903	SHIM	1

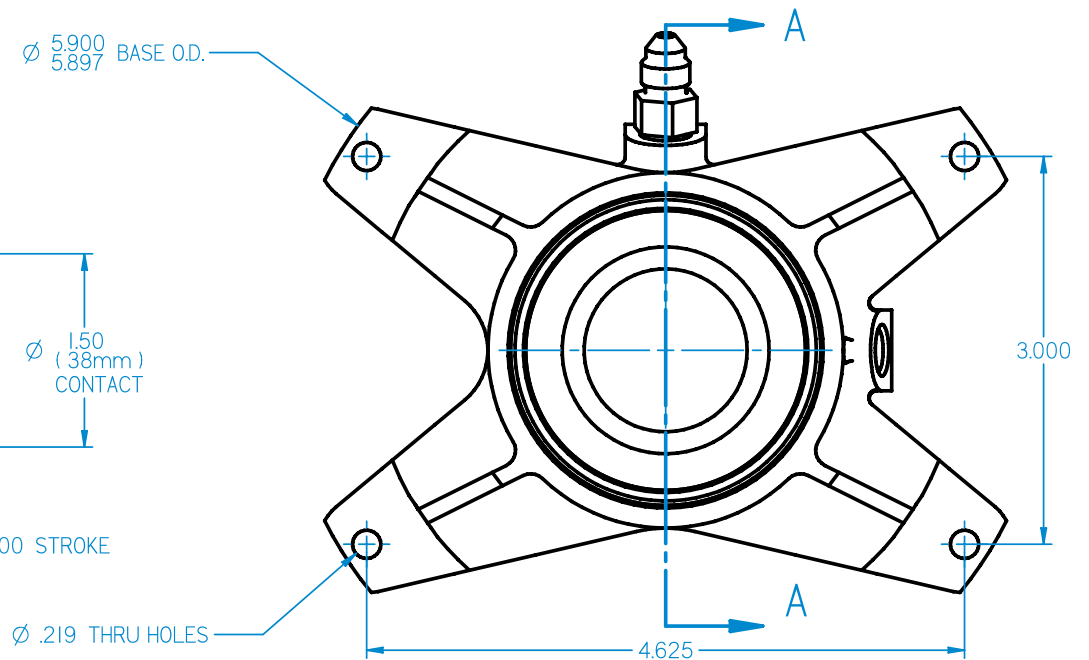
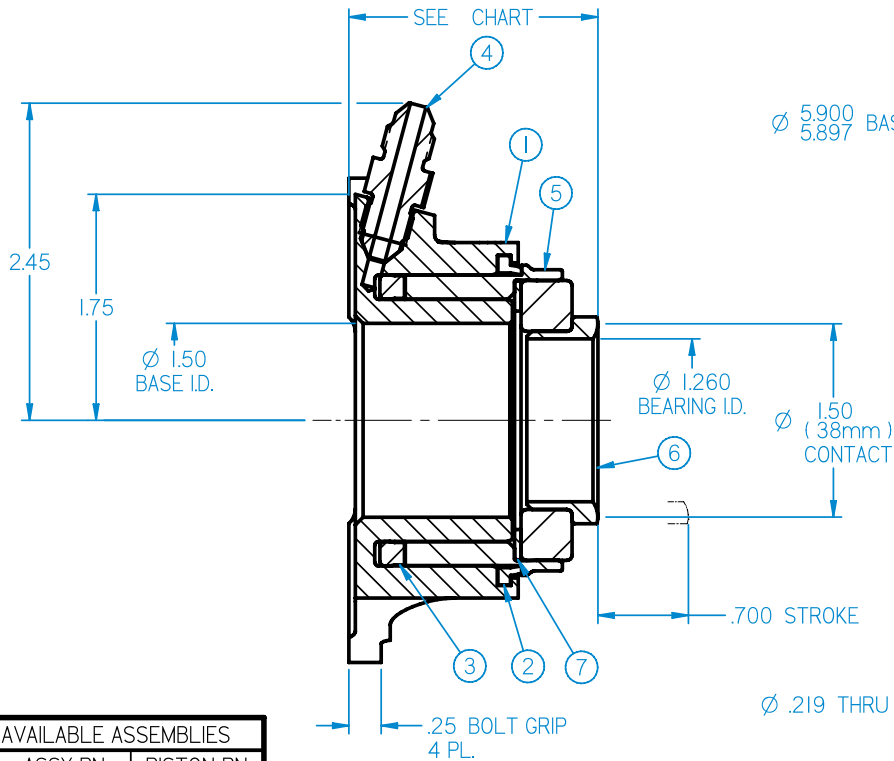


CHART OF AVAILABLE ASSEMBLIES		
HEIGHT	ASSY PN	PISTON PN
1.87-1.92'	60-5300	62-6000
1.97-2.02'	60-5310	62-6001
2.07-2.12'	60-5320	62-6002
2.17-2.22'	60-5330	62-6003
2.27-2.32'	60-5340	62-6004
2.37-2.42'	60-5350	62-6005
2.47-2.52'	60-5360	62-6006
2.57-2.62'	60-5370	62-6007
2.67-2.72'	60-5380	62-6008
2.77-2.82'	60-5390	62-6009

SECTION A-A

INSTALLATION NOTES:

1. USE ONLY WITH DOT-3 OR DOT-4 BRAKE FLUID.
2. NO INTERNAL TRAVEL LIMITER. MUST BE USED WITH CLUTCH PEDAL STOP.
3. SEAL REBUILD KIT = 62-905.
4. SEAL INSTALLATION TOOL = 96-002.
5. HYDRAULIC AREA = 1.215 SQ IN.
6. EITHER PORT MAY BE USED FOR FEED OR BLEED.
7. ORIENTATE BLEED PORT TO WITHIN 10 DEGREES OF TOP CENTER TO FACILITATE BLEEDING PROCESS.
8. UNIT IS SHIPPED WITH SHIM 62-903 (.050" THICK) INSTALLED UNDER THE BEARING WHICH MAY BE REMOVED FOR ADDITIONAL CLEARANCE.
9. BOTH PORTS 3/8-24 UNF X .28 THREAD DEPTH.

* HEIGHTS SHOWN IN CHART ARE WITH AND WITHOUT 62-903 SHIM



www.tiltonracing.com

