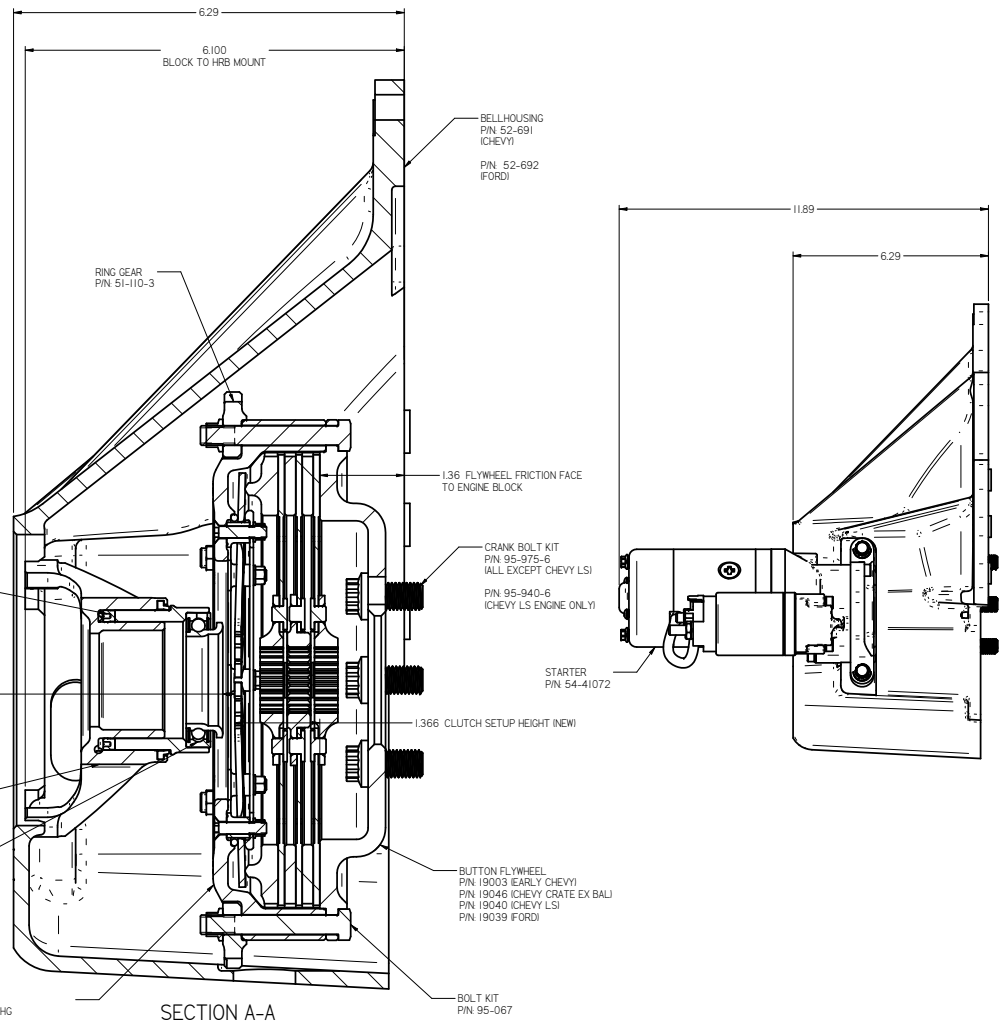
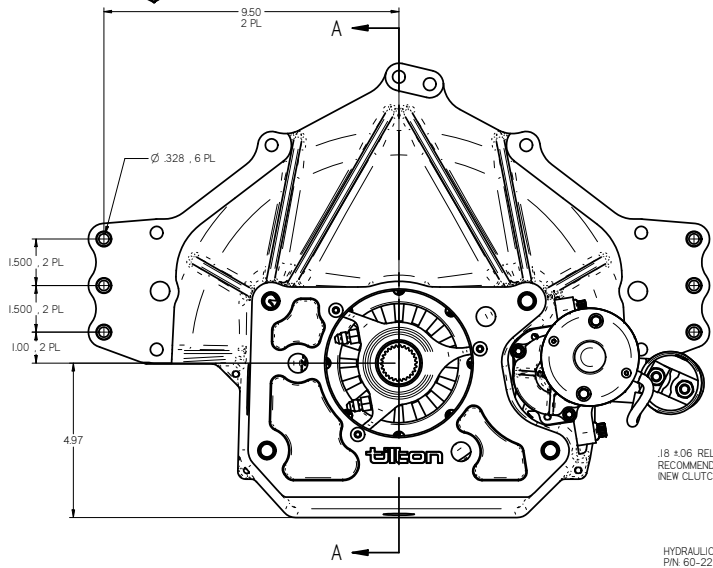
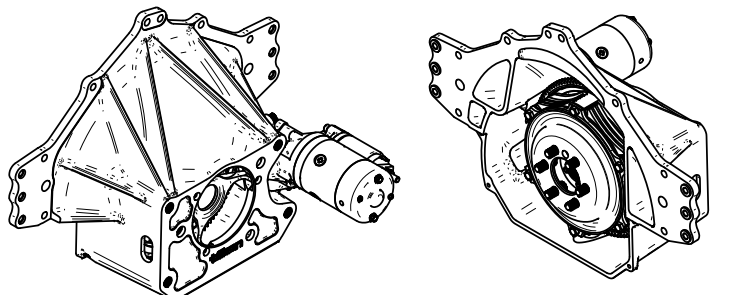


REV	ECN	DATE	BY	CHANGE OR ADDITION
-----	-----	------	----	--------------------



SEAL REPAIR KIT
PIN: 62-905

.18 ±.06 RELEASE BEARING CLEARANCE
RECOMMENDED RANGE
(NEW CLUTCH, HRB COMPRESSED)

HYDRAULIC RELEASE BEARING
PIN: 60-2231
(3.150 OVERALL HEIGHT FOR
ALL 7.25" THREE DISC APPLICATIONS)

REPLACEMENT BEARING
PIN: 62-031

CLUTCH
PIN: 66-803HG

CLUTCH DISC PACK
PIN: 64185-4-VTV-36
(1-5/32 X 26T SPLINE HUBS)

CLUTCH DISC PACK
PIN: 64185-4-VTV-58
(1-1/4 X 29T SPLINE HUBS)

POPULAR BELLHOUSING KIT PART NUMBERS	
PART NUMBER	DESCRIPTION
52-51730	BH KIT, 110T ALUM, CHEVY (EARLY), 7.25" METALLIC, 3 DISC
52-51730-58	BH KIT, 110T ALUM, CHEVY (EARLY), 7.25" METALLIC, 3 DISC, W/ 1-1/4 X 29T HUBS
52-52730	BH KIT, 110T ALUM, FORD, 7.25" METALLIC, 3 DISC
52-52730-58	BH KIT, 110T ALUM, FORD, 7.25" METALLIC, 3 DISC, W/ 1-1/4 X 29T HUBS
52-53730	BH KIT, 110T ALUM, CHEVY (LSI), 7.25" METALLIC, 3 DISC
52-53730-58	BH KIT, 110T ALUM, CHEVY (LSI), 7.25" METALLIC, 3 DISC, W/ 1-1/4 X 29T HUBS
52-54730	BH KIT, 110T ALUM, CHEVY (EX BAL CRATE), 7.25" METALLIC, 3 DISC

- NOTES:
1. DIMENSIONS AND TOLERANCES PER ASME Y14.5 - 2009
 2. UNLESS OTHERWISE SPECIFIED, ALL DIMENSIONS ARE IN INCHES.
 3. UNLESS OTHERWISE SPECIFIED, ALL KITS COME WITH 1-5/32 X 26T SPLINE HUBS.

TILTON ENGINEERING, INC.
25 EASY STREET P.O. BOX 1787 BUELLTON, CALIFORNIA 93427 USA
PHONE: (805) 688-2353 FAX: (805) 688-2745 WWW.TILTONRACING.COM



TITLE: BELLHOUSING KIT
REAR STARTER, 110T RING GEAR, 7.25" TRIPLE DISC CLUTCH

DRN BY WAHL	CHKD	SCALE 1:1	DWG 7637	REV NC
PIN AS NOTED	DATE 2/14/2022	SHEET 1 OF 1		

This document contains proprietary information of TILTON ENGINEERING, INC., and its receipt or possession does not convey the rights to reproduce, disclose its contents, or to manufacture, use or sell anything it may describe. Reproduction, disclosure, or use without specific written authorization of TILTON ENGINEERING, INC. is strictly forbidden.

TILTON ENGINEERING
INC.