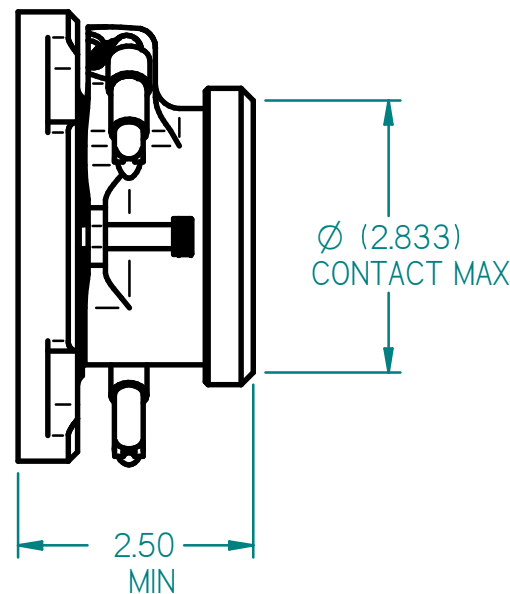
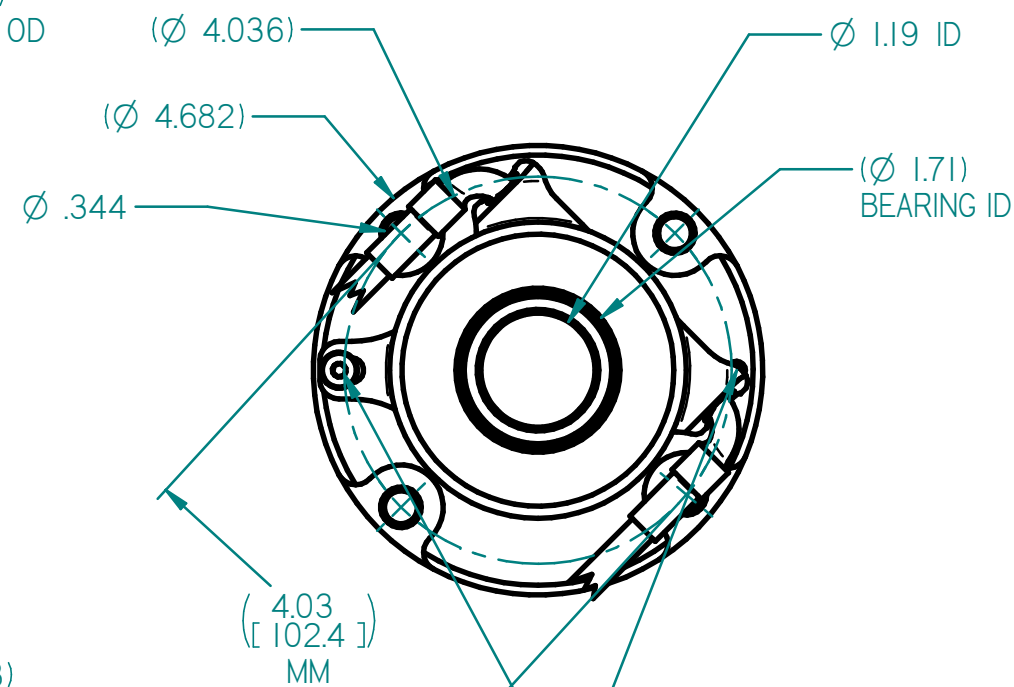
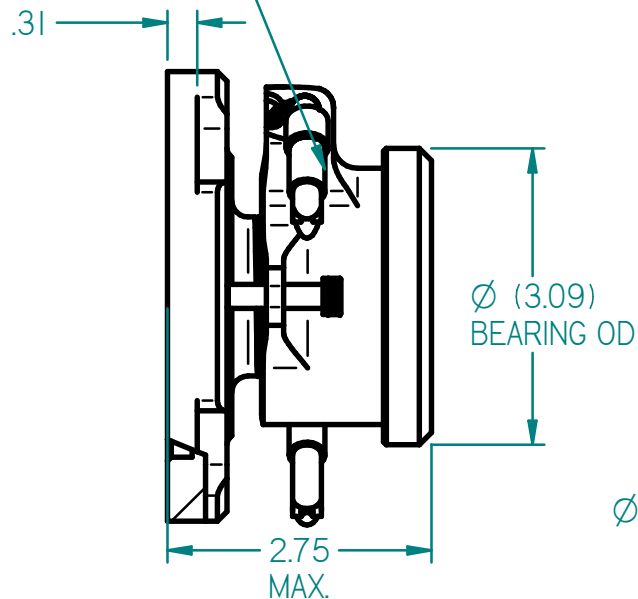
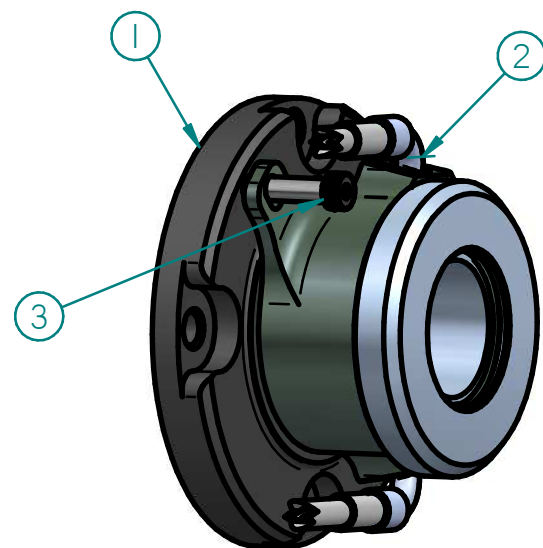


REV	ECN	DATE	BY	CHANGE OR ADDITION
-----	-----	------	----	--------------------

AN-4 HYDRAULIC LINES, 15" LONG, FEMALE SWIVEL ENDS (SHOWN TRUNCATED)

CUSTOM DUAL O-RING FITTING WITH SNAP RING  
ALLOWS 360° ROTATION FOR ROUTING



ITEM #	PART #	DESCRIPTION	QTY
1	62-693	RETAINER ASSEMBLY, GM, TREMEC, 6000 SERIES	1
2	60-610	HYDR REL BRG, FLAT FACE	1
3	1/4 X 1.0 SB	SHOULDER BOLT	1

**NOTES:**

1. DIMENSIONS AND TOLERANCES PER ASME Y14.5 - 2009
2. UNLESS OTHERWISE SPECIFIED, ALL DIMENSIONS ARE IN INCHES.
3. SHOULDER BOLT IS INCLUDED WITH 62-893 ASSEMBLY.
4. USE ONLY WITH DOT-3 OR DOT-4 BRAKE FLUID.
5. NO INTERNAL TRAVEL LIMITER. MUST BE USED WITH CLUTCH PEDAL STOP.
6. SEAL REBUILD KIT = 62-905.
7. SEAL INSTALLATION TOOL = 96-002.
8. HYDRAULIC AREA = 1.215 SQ IN.
9. EITHER PORT MAY BE USED FOR FEED OR BLEED.
10. ORIENTATE BLEED PORT TO WITHIN 10 DEGREES OF TOP CENTER TO FACILITATE BLEEDING PROCESS.

This document contains proprietary information of TILTON ENGINEERING, INC., and its receipt or possession does not convey the rights to reproduce, disclose its contents, or to manufacture, use or sell anything it may describe. Reproduction, disclosure, or use without specific written authorization of TILTON ENGINEERING INC. is strictly forbidden.



TILTON ENGINEERING, INC.		FAX 805/688-2745	
25 EASY STREET, P.O. BOX 1787, BUELLTON, CA 93427 805/688-2353			
TITLE: <b>FLAT FACE HYDRAULIC RELEASE BEARING ASSEMBLY</b> <b>ADJUSTABLE HEIGHT, MAXIMUM / MINIMUM</b>			
DRAWN BY LUND	CHKD WAHL	SCALE 1:1	SIZE DWG
P/N 60-6106	DATE 4/5/2016	SHEET 1 OF 1	B 6323
			REV B