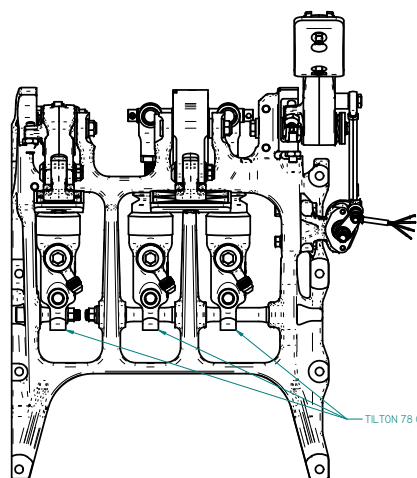
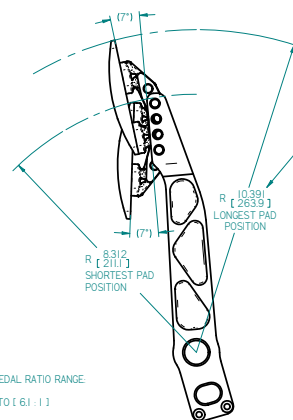
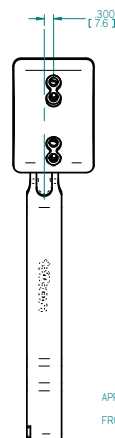
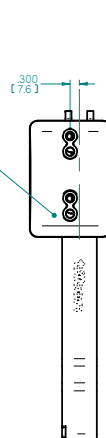


		2		1	
REV	ECN	DATE	BY	CHANGE OR ADDITION	

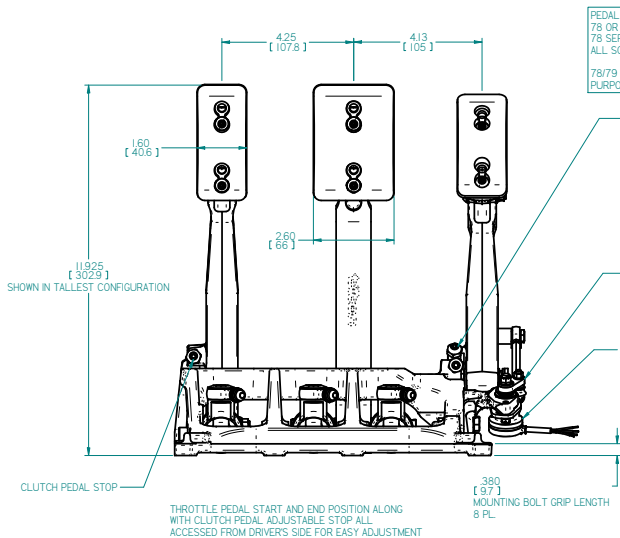
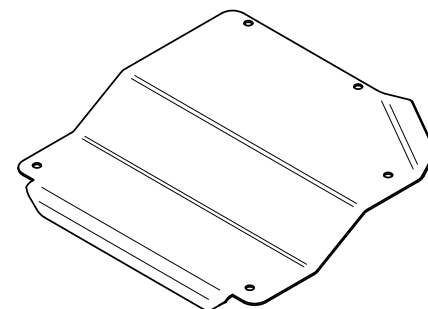


PEDAL PAD ADJUSTMENTS:

- HORIZONTAL
- VERTICAL
- FORE/AFT ANGLE
- 180 POSSIBLE POSITIONS PER PEDAL

— DISTANCE FROM PIVOT
TO TOP OF PEDAL PAD

FALSE FLOOR COVER PLATE SYSTEM (72-853-FF)
AVAILABLE SEPARATELY



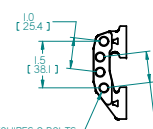
PEDAL ASSEMBLY IS COMPATIBLE WITH TILTON ENGINEERING
78 OR 79 SERIES MASTER CYLINDERS AT BOTH BRAKE PEDAL LOCATIONS
78 SERIES MASTER CYLINDERS AT CLUTCH PEDAL
ALL SOLD SEPARATELY

78/79 SERIES MASTER CYLINDERS SHOWN HERE ARE FOR ILLUSTRATION PURPOSES ONLY AND ARE NOT INCLUDED WITH PEDAL ASSEMBLY

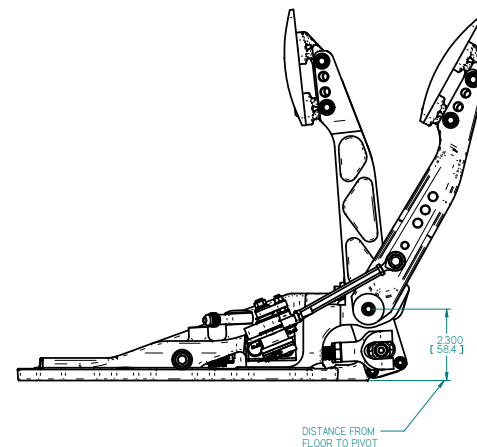
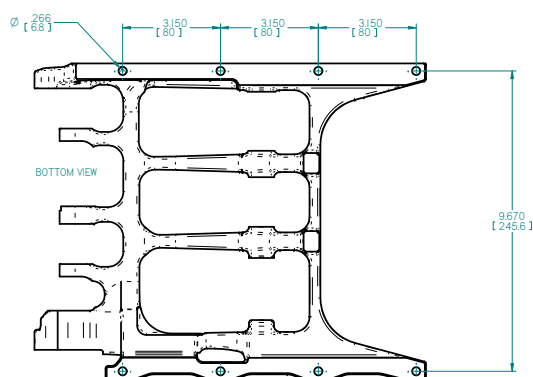
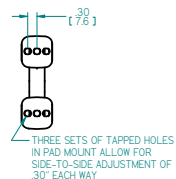
- THROTTLE PEDAL STOP
(FORWARD POSITION ADJUSTMENT)

— TILTON THROTTLE LINKAGE KITS FOR DRIVE BY WIRE OR MECHANICAL CABLE AVAILABLE SEPARATELY

- DUAL INPUT/DUAL OUTPUT
THROTTLE POSITION SENSOR



BRACKET CONNECTION REQUIRES 2 BOLTS -
USE WIDEST SPREAD AVAILABLE PER
PAD ANGLE DESIRED.
1.0" BOLT SPREAD MINIMUM



NOTES:

1. DIMENSIONS AND TOLERANCES PER ASME Y14.5 - 2009
2. UNLESS OTHERWISE SPECIFIED, ALL DIMENSIONS ARE IN INCHES.

TILTON ENGINEERING, INC.
25 EASY STREET P.O. BOX 1787 BUELLTON, CALIFORNIA 93427 USA
PHONE: (805) 688-2353 FAX: (805) 688-2745 WWW.TILTONRACING.COM



TITLE: INSTALLATION DRAWING, ASSEMBLY, PEDALS
UNDERFOOT, STATIONARY, THROTTLE, BRAKE, CLUTCH, PIVOT TYPE MASTERS

DRN BY	WAHL	CHKD	DAHLM	SCALE	1:2	DWG	8118	REV	NC
P/N	72-856-S	DATE	12/30/2024	SHEET	1 OF 1				

tjfonengineering®

This document contains proprietary information of TILTON ENGINEERING, INC., and its receipt or possession does not convey the rights to reproduce, disclose its contents, or to manufacture, use or sell anything it may describe. Reproduction, disclosure, or use without specific written authorization of TILTON ENGINEERING, INC. is strictly forbidden.