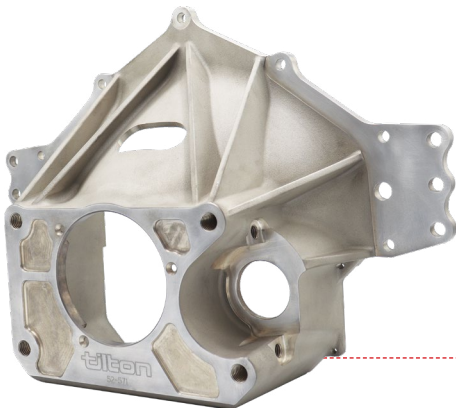
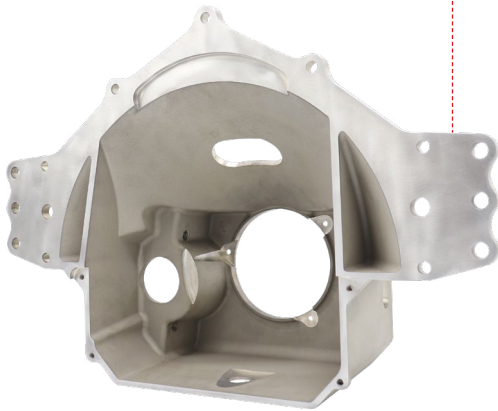


Typical Applications

- Late Model
- Super Late Model
- Asphalt Modified



Features

➤ Bellhousing

- Magnesium rear-mount starter bellhousing designed for maximum weight savings
- Compact design provides increase ground clearance and exhaust header clearance. Distance from centerline of crankshaft to bottom of bellhousing is only 4.5"
- Integral mounting ears for use as rear engine mount
- Accepts transmissions with Chevy 4-bolt mounting pattern and 4.68" register diameter
- Blueprinted for parallelism and concentricity
- Weighs 7.6 lbs

➤ Clutch-Flywheel-Assembly

- 5.5 ULTRA metallic clutch. 2-disc and 3-disc options
- Billet steel 99-tooth (8.42") ring gear
- Button Flywheel
- 26-Spline clutch disc pack
- Aircraft-grade clutch bolts
- High-strength ARP flywheel bolts

➤ Hydraulic Release Bearing

- 2300-Series hydraulic release bearing
- 38mm contact diameter bearing
- 3-bolt bellhousing mounted

➤ Starter

- 40000-Series 3.0HP high-torque gear reduction mini starter
- Rear-mounts on bellhousing
- Side-bolt mounting design provides secure mounting to bellhousing and easy access for service

Clutch Type*	Chevy Early	Chevy Crate	Chevy LS	Ford Small Block
5.5 ULTRA 2-disc	52-61620	52-64620	52-63620	52-62620
5.5 ULTRA 3-disc	52-61630	52-64630	52-63630	52-62630

*Fits 1 5/32" x 26 spline input shaft. Contact Tilton for other spline options.

Service Parts



Bellhousings

Description	Part Number
Bellhousing, Chevy, magnesium	52-571
Bellhousing, Ford, magnesium	52-572



Flywheel

Description	Part Number
Button flywheel, Chevy Early	19038
Button flywheel, Chevy Crate, balanced	19042
Button flywheel, Chevy LS	19041
Button flywheel, Ford Small Block	19043
Ring gear, 99-tooth	51-099-2
Ring gear spacer, ULTRA 5.5 2-disc	51-001



Clutch & Disc Packs

Description	Part Number
5.5 ULTRA, 2-disc metallic	67-202HG
Disc pack, 2 discs, 26 spline	64140-1-AA-36
5.5 ULTRA, 3-disc metallic	67-203HG
Disc pack, 3 disc, 26-spline	64140-1-ABA-36



Hydraulic Release Bearing

Description	Part Number
HRB, 5.5 ULTRA 2-disc clutch	60-2340
HRB, 5.5 ULTRA 3-disc clutch	60-2310



Starter

Description	Part Number
Super Starter, bellhousing mount	54-41072



Bolt Kits

Description	Part Number
Clutch bolt kit	95-036
Flywheel bolt kit, all except Chevy LS	95-952-6
Flywheel bolt kit, Chevy LS	95-940-6