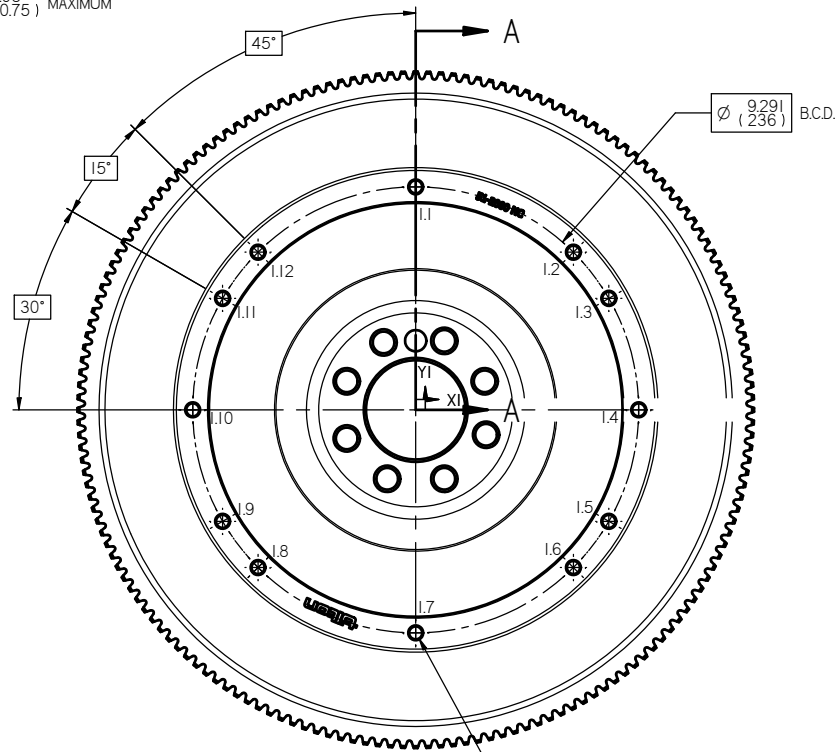
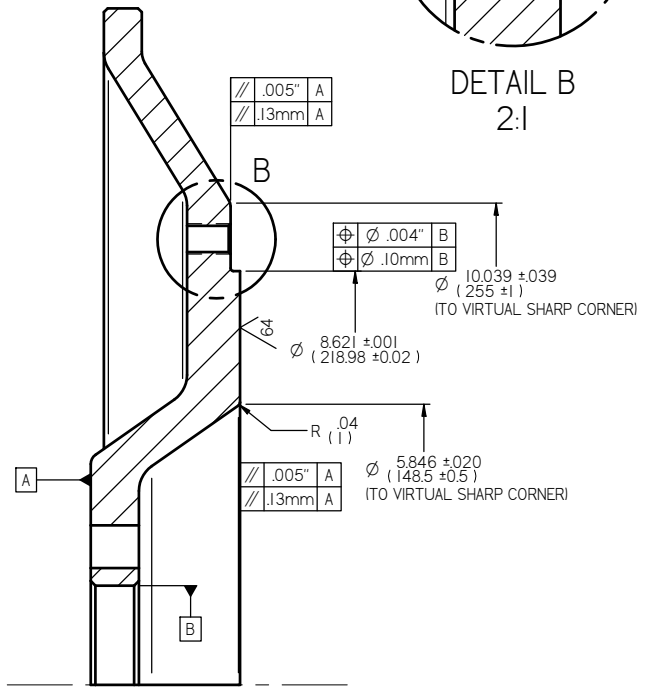
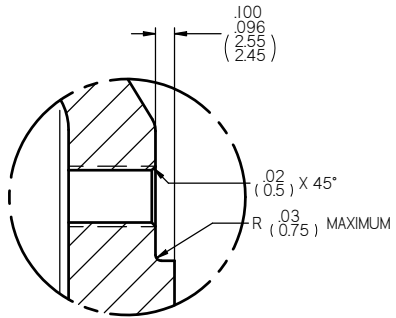


REV	ECN	DATE	BY	CHANGE OR ADDITION
NC	N/A	1/20/2023	WAHL	INITIAL RELEASE



Hole	X	Y
I.1	0.0000 in	4.6457 in
I.2	3.2850 in	3.2850 in
I.3	4.0233 in	2.3228 in
I.4	4.6457 in	0.0000 in
I.5	4.0233 in	-2.3228 in
I.6	3.2850 in	-3.2850 in
I.7	0.0000 in	-4.6457 in
I.8	-3.2850 in	-3.2850 in
I.9	-4.0233 in	-2.3228 in
I.10	-4.6457 in	0.0000 in
I.11	-4.0233 in	2.3228 in
I.12	-3.2850 in	3.2850 in

Hole	X	Y
I.1	0.000 mm	118.000 mm
I.2	83.439 mm	83.439 mm
I.3	102.191 mm	59.000 mm
I.4	118.000 mm	0.000 mm
I.5	102.191 mm	-59.000 mm
I.6	83.439 mm	-83.439 mm
I.7	0.000 mm	-118.000 mm
I.8	-83.439 mm	-83.439 mm
I.9	-102.191 mm	-59.000 mm
I.10	-118.000 mm	0.000 mm
I.11	-102.191 mm	59.000 mm
I.12	-83.439 mm	83.439 mm

MJ8 X 1.25 X 6H-RH THRU,
.02 (.5mm) X 45° CH,
I2 PL, NOT EQ. SP,
AS SHOWN

⊕	∅ .008" (M)	B	A
⊕	∅ .20mm (M)	B	A

- NOTES:
 1. DIMENSIONS AND TOLERANCES PER ASME Y14.5 - 2009.
 2. UNLESS OTHERWISE SPECIFIED, ALL DIMENSIONS ARE IN INCHES (mm).

TOLERANCES: UNLESS SPECIFIED OTHERWISE .X ± .020 .XX ± .010 .XXX ± .005 FRACT ± 1/32 ANGLE ± 1/2° CONC(TIR) .005		DRILL HOLES .013-.040: +.001/-001 .041-.130: +.002/-001 .131-.229: +.003/-001 .230-.500: +.004/-001 .501-.750: +.005/-001 .751-1.000: +.007/-001		MAT'L SPEC COND HARD FINISH SPEC	TILTON ENGINEERING, INC. 25 EASY STREET, P.O. BOX 1787, BUELLTON, CA 93427 PHONE: 805/688-2353 FAX: 805/688-2745 WWW.TILTONRACING.COM	<p>THIS DRAWING USES THIRD ANGLE PROJECTION</p>		
TITLE: FLYWHEEL SPECIFICATIONS FOR USED WITH TILTON ST-215 OR OT-215 CLUTCHES				DRAWN BY WAHL P/N STANDARD 10161	CHKD DATE 01/19/2023	SCALE 1:2 SHEET 1 OF 1	SIZE DWG C 7417	REV NC



This document contains proprietary information of TILTON ENGINEERING, INC. and its receipt or possession does not convey the rights to reproduce, disclose its contents, or to manufacture, use or sell anything it may describe. Reproduction, disclosure, or use without specific written authorization of TILTON ENGINEERING, INC. is strictly forbidden.