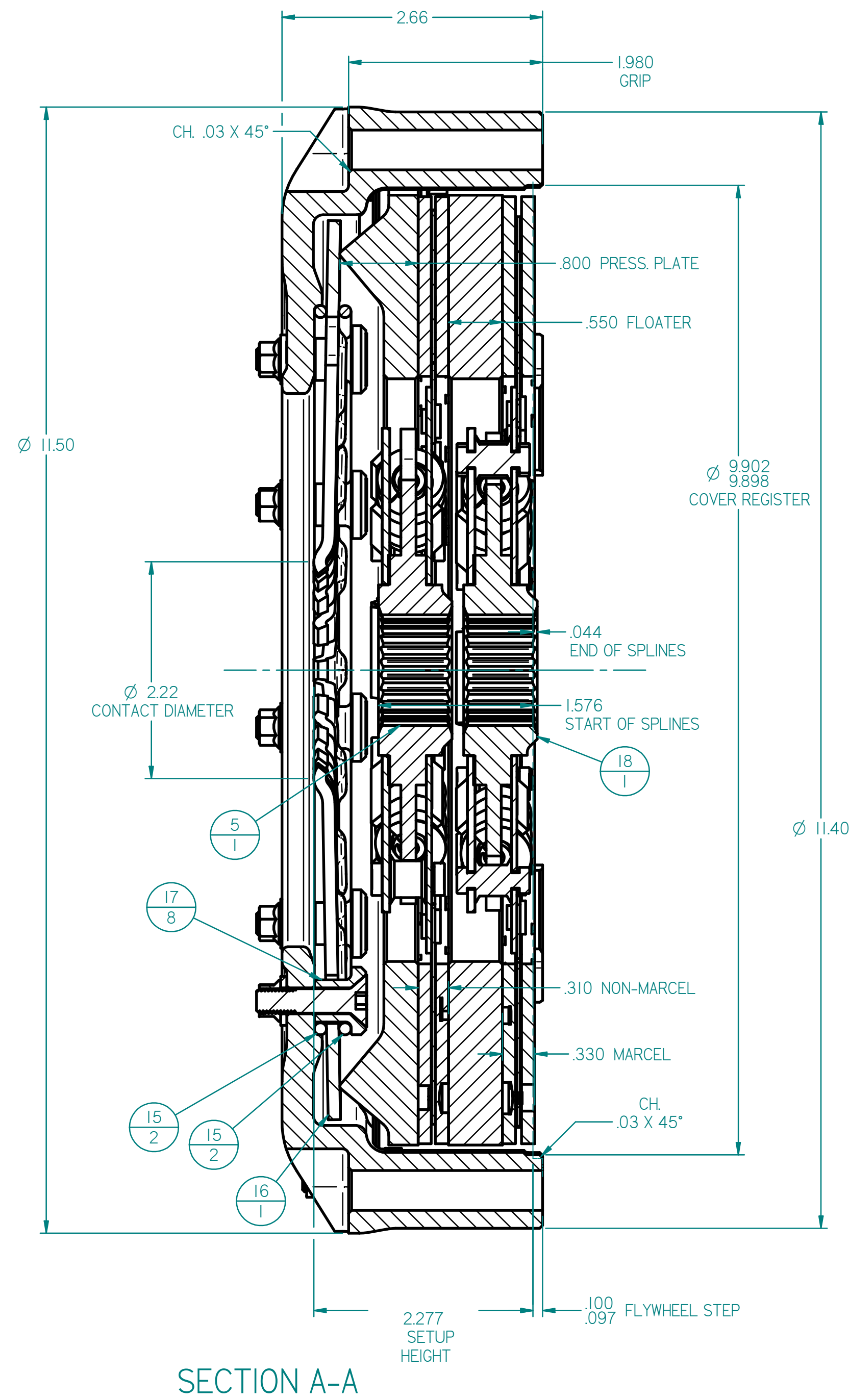
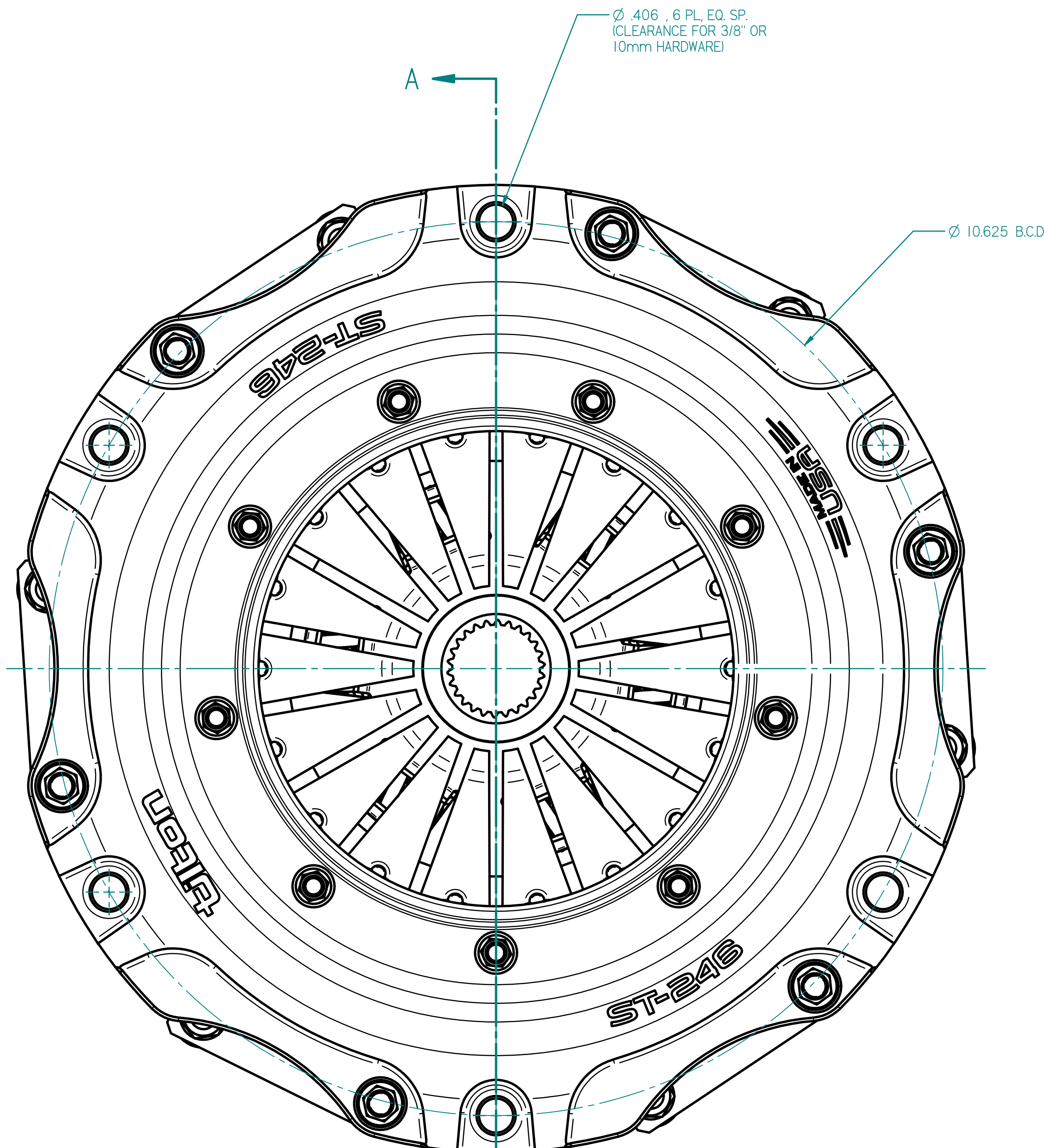
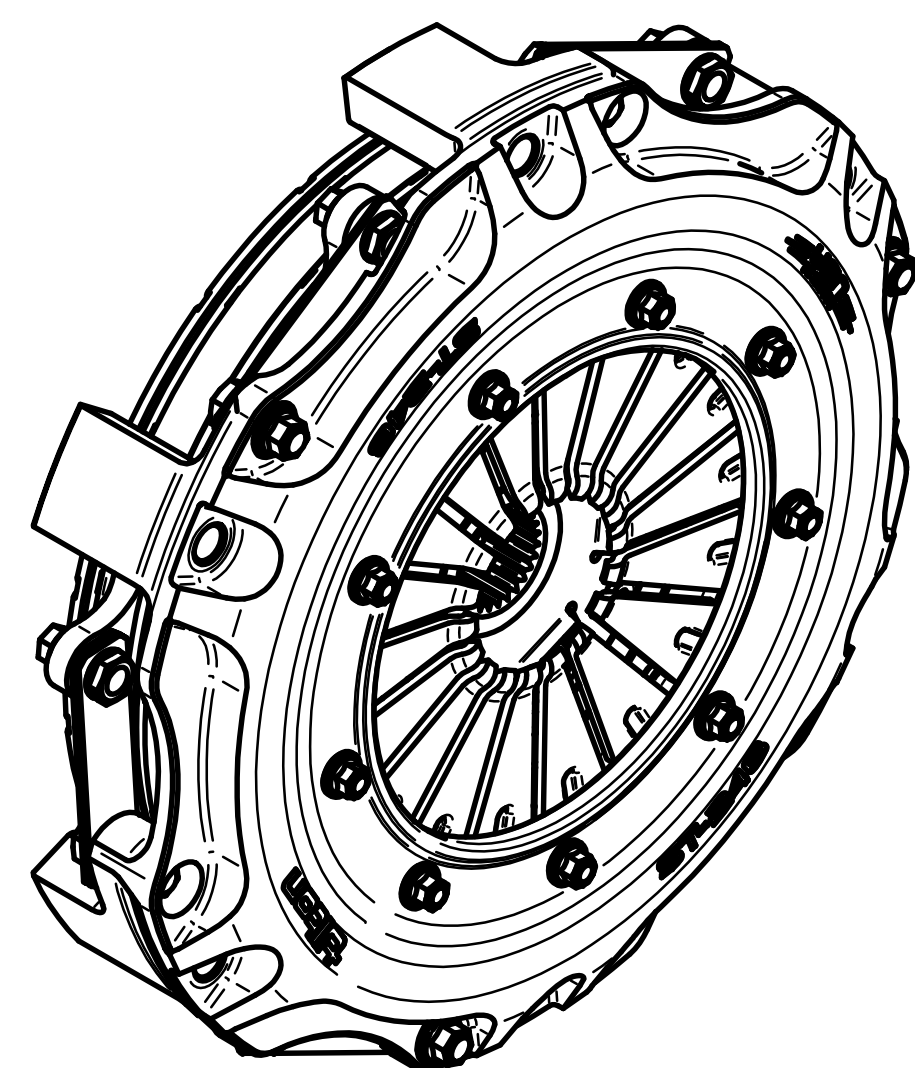
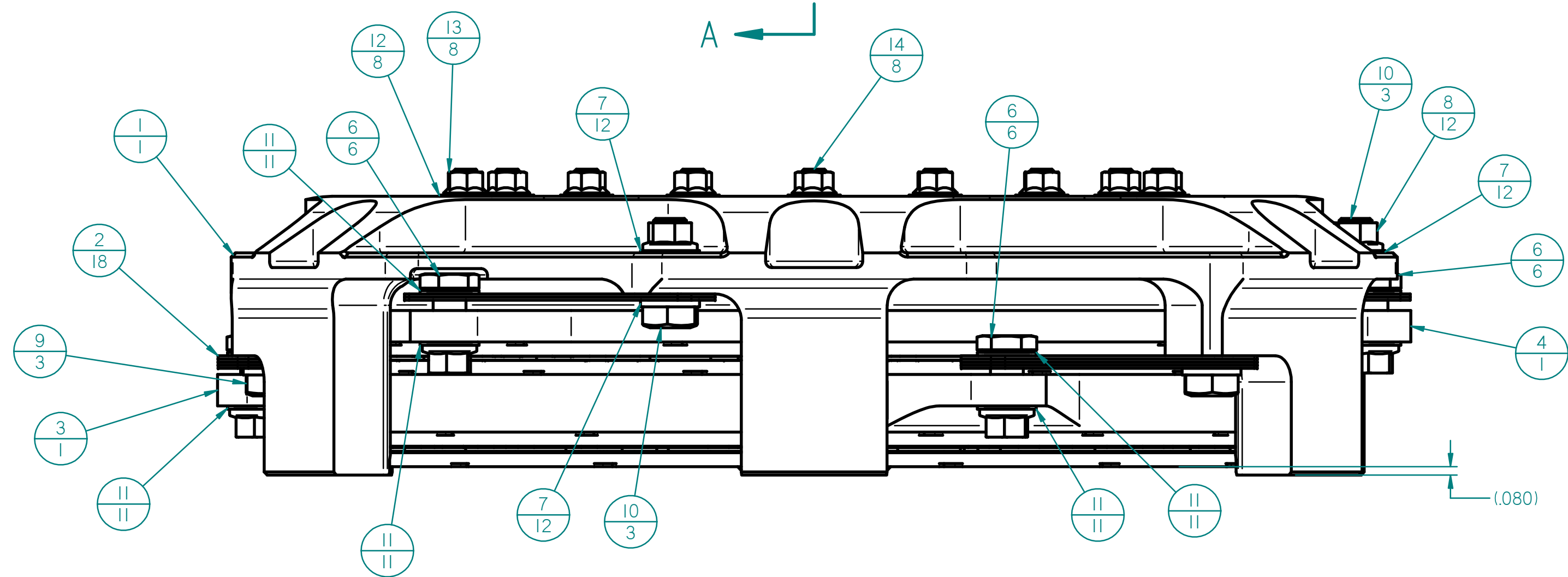


REV	ECN	DATE	BY	CHANGE OR ADDITION
NC		11/2/2018	LUND	INITIAL RELEASE



ITEM #	PART #	DESCRIPTION	QTY
1	69-120-2S	CLUTCH COVER, 246mm TWIN DISC CLUTCH	1
2	69-125	DRIVE STRAP, 246mm TWIN DISC CLUTCH	18
3	69-119S	FLOATER PLATE, 246mm TWIN DISC CLUTCH	1
4	69-118UHR	PRESSURE PLATE, 246mm TWIN DISC CLUTCH	1
5	64246-5-S-36	DISC, FRICTION, ASSEMBLY, 246MM, NO MARCEL	1
6	NAS6205-5	BOLT, AIRCRAFT, 5/16-24 X .75	6
7	AN960-516	WASHER, FLAT, AIRCRAFT, FOR 5/16 BOLT	12
8	MS21042-5	THIN LOCK NUT 5/16-24	12
9	AN5-7A	HEX BOLT, AIRCRAFT, 5/16-24X.969	3
10	AN5-6A	HEX BOLT, AIRCRAFT, 5/16-24X.844	3
11	AN960-516L	WASHER, FLAT, AIRCRAFT, THIN, FOR 5/16 BOLT	11
12	AN960-416	AN960-416 1/4" WASHER	8
13	MS21042-4	LOCK NUT, KAYNAR, 1/4-28 UNF	8
14	1/4-28 X 1.125 FHCS ZP	BOLT, 1/4-28 X 1.125L, FHCS, ZP	8
15	69-102	PIVOT WIRE, 246mm TWIN DISC CLUTCH	2
16	69-101G	DIAPHRAGM SPRING, 246mm TWIN DISC CLUTCH	1
17	69-103	SLEEVE, FLANGE HEAD, 1/4 ID	8
18	64246-5M-S-36	DISC, FRICTION, ASSEMBLY, 246MM, WITH MARCEL	1



NOTES:
1. DIMENSIONS AND TOLERANCES PER ASME Y14.5 - 2009
2. UNLESS OTHERWISE SPECIFIED, ALL DIMENSIONS ARE IN INCHES.
3. SEE SHEET 2 FOR FASTENER LOCATION CLARIFICATION.

TILTON ENGINEERING, INC.		(805) 688-2353 FAX (805) 688-2745	
25 EASY STREET P.O. BOX 1787		BUELLTON, CALIFORNIA 93427 USA	
TITLE: CLUTCH ASSEMBLY		246mm, TWIN DISC CLUTCH, THICK FLOATER (SHOWN WITH SPRUNG HUB DISCS)	
DRN BY WAHL	CHKD LUND	SCALE 1:1	DWG 6982
P/N 69-402UG	DATE 11/2/2018	SHEET 1 OF 2	REV NC

This document contains proprietary information of TILTON ENGINEERING, INC., and its receipt or possession does not convey the rights to reproduce, disclose its contents, or to manufacture, use or sell anything it may describe. Reproduction, disclosure, or use without specific written authorization of TILTON ENGINEERING, INC. is strictly forbidden.

TILTON ENGINEERING INC